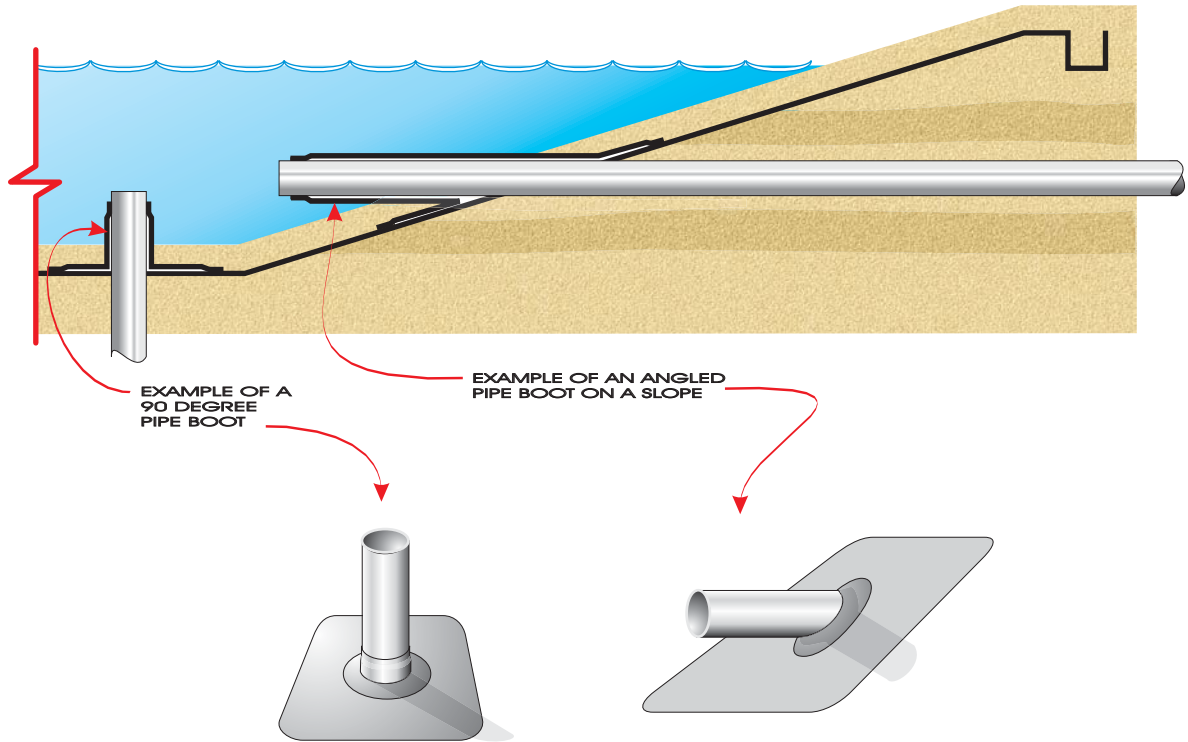


PVC MEMBRANE LINER PIPE BOOT DETAILS

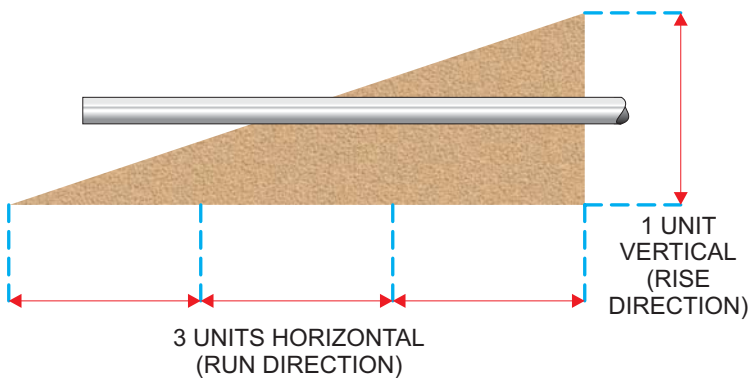
PIPE BOOTS ARE TYPICALLY FABRICATED FROM THE SAME MEMBRANE LINER USED IN THE RESERVOIR. THEY ARE DESIGNED TO BE SEALED WATER-TIGHT TO THE PIPE AND LINING SYSTEM.



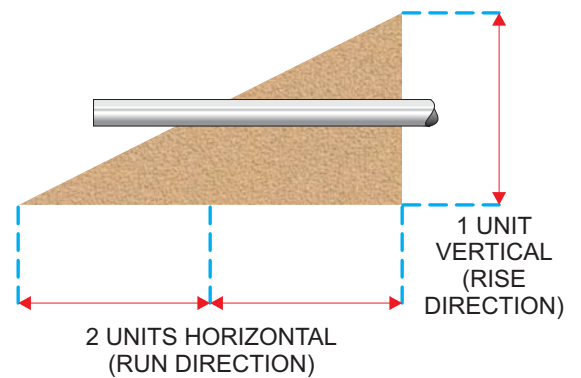
ORDERING REQUIREMENTS

PIPE BOOT DETAILS ARE VERY SPECIFIC CUSTOM FABRICATED ITEMS. TO ORDER, THE PIPE SIZE AND TYPE (VERTICAL OR HORIZONTAL) MUST BE SPECIFIED. IF A BOOT FOR A HORIZONTAL PIPE PENETRATION IS REQUIRED, THE STEEPNESS OF THE SLOPE MUST ALSO BE SPECIFIED IN TERMS OF THE SLOPE RATIO. SLOPE RATIOS ARE DETERMINED BY COMPARING THE RISE TO RUN RATIO AS ILLUSTRATED BELOW:

EXAMPLE OF A 3:1 SLOPE



EXAMPLE OF A 2:1 SLOPE

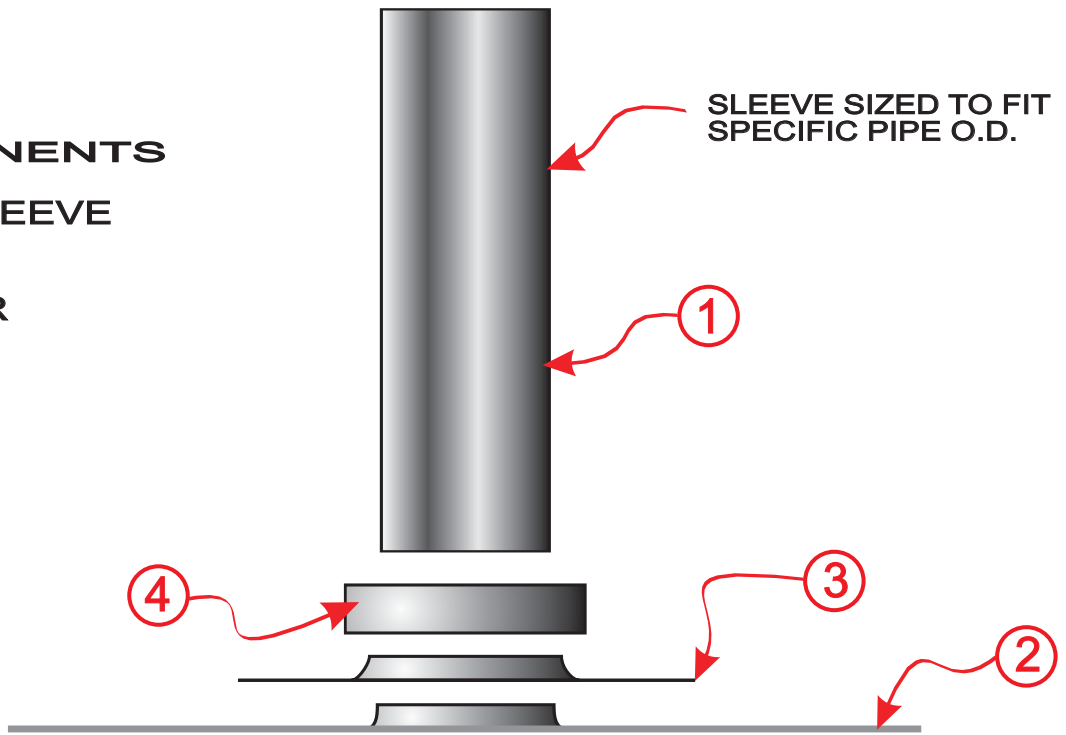


PVC PIPE BOOT DETAIL FOR VERTICAL PENETRATIONS

ALL PARTS ARE MADE OF PVC MEMBRANE LINER UNLESS OTHERWISE NOTED

BOOT COMPONENTS

1. PIPE SLEEVE
2. APRON
3. DONUT
4. COLLAR



EXPLODED VIEW

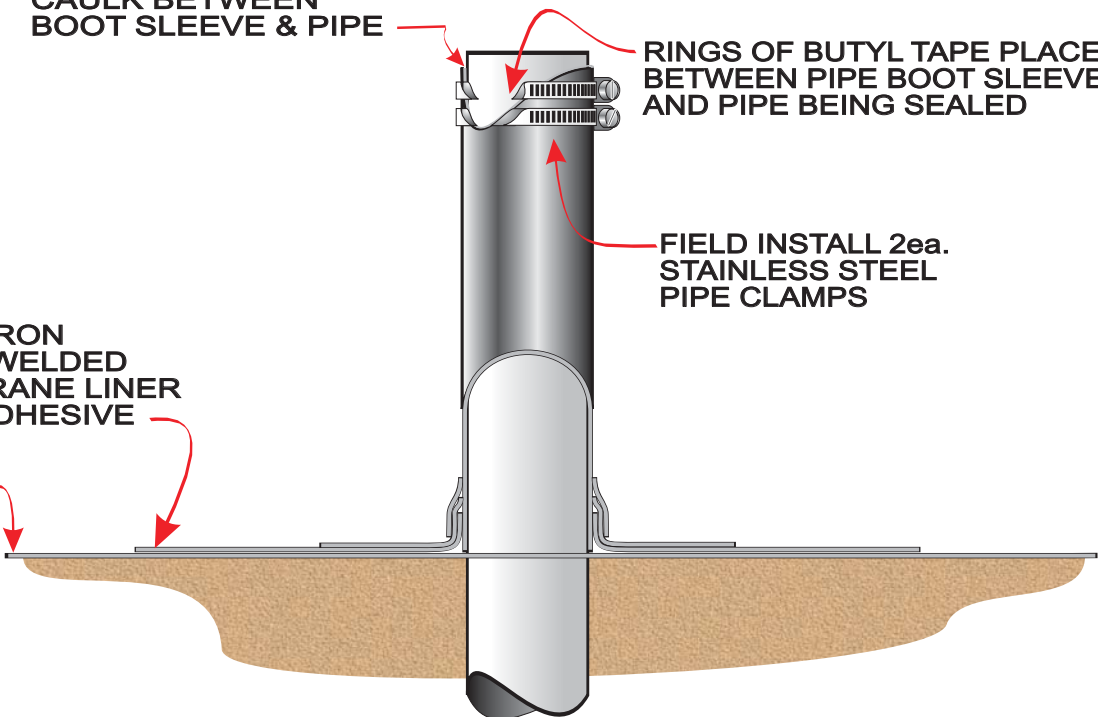
FINISH BEAD OF SIKAFLEX 1A CAULK BETWEEN BOOT SLEEVE & PIPE

RINGS OF BUTYL TAPE PLACED BETWEEN PIPE BOOT SLEEVE AND PIPE BEING SEALED

FIELD INSTALL 2ea. STAINLESS STEEL PIPE CLAMPS

APRON FIELD WELDED TO MEMBRANE LINER WITH ADHESIVE

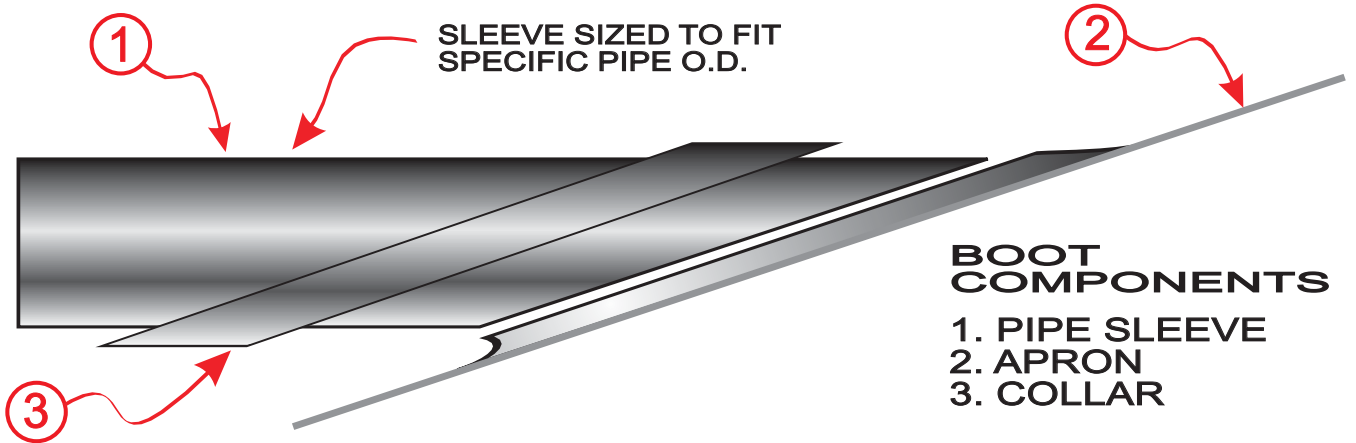
PVC MEMBRANE LINER



CUT-AWAY VIEW OF INSTALLED PIPE BOOT

PVC PIPE BOOT DETAIL FOR HORIZONTAL PENETRATIONS

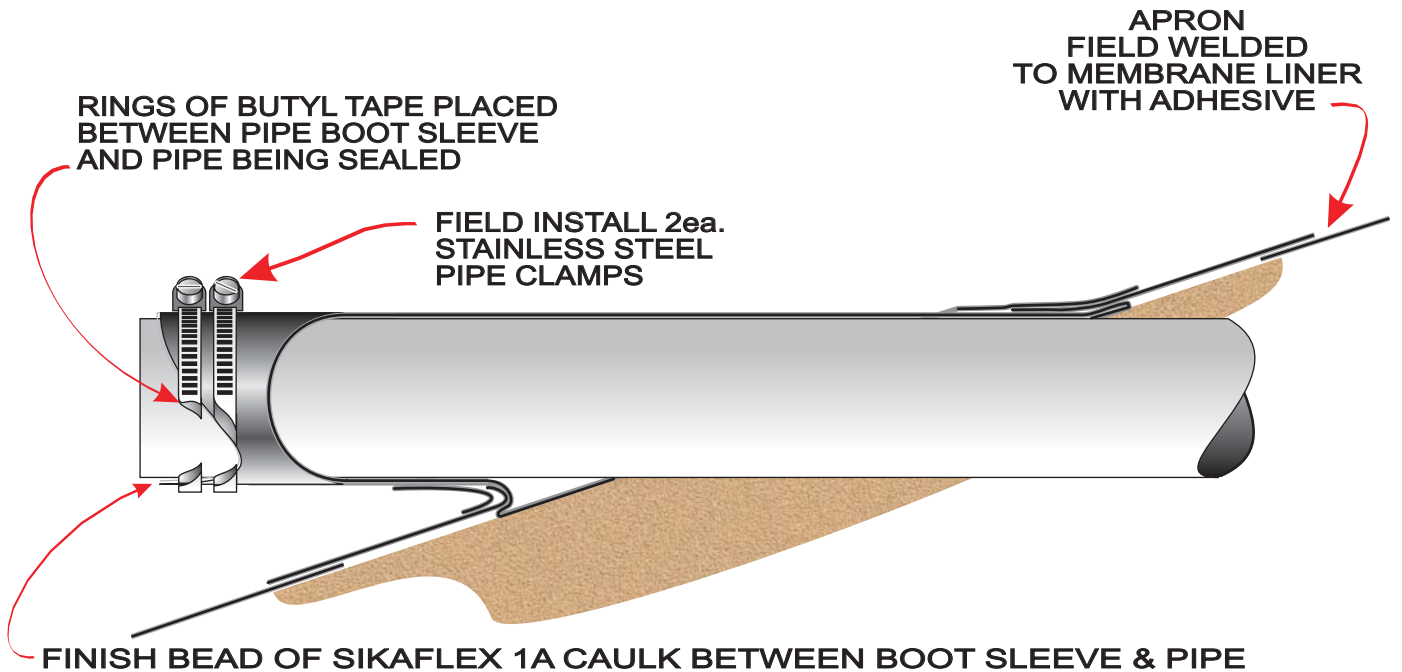
ALL PARTS ARE MADE OF PVC MEMBRANE LINER UNLESS OTHERWISE NOTED



EXPLODED VIEW



ASSEMBLED VIEW



CUT-AWAY VIEW OF INSTALLED PIPE BOOT